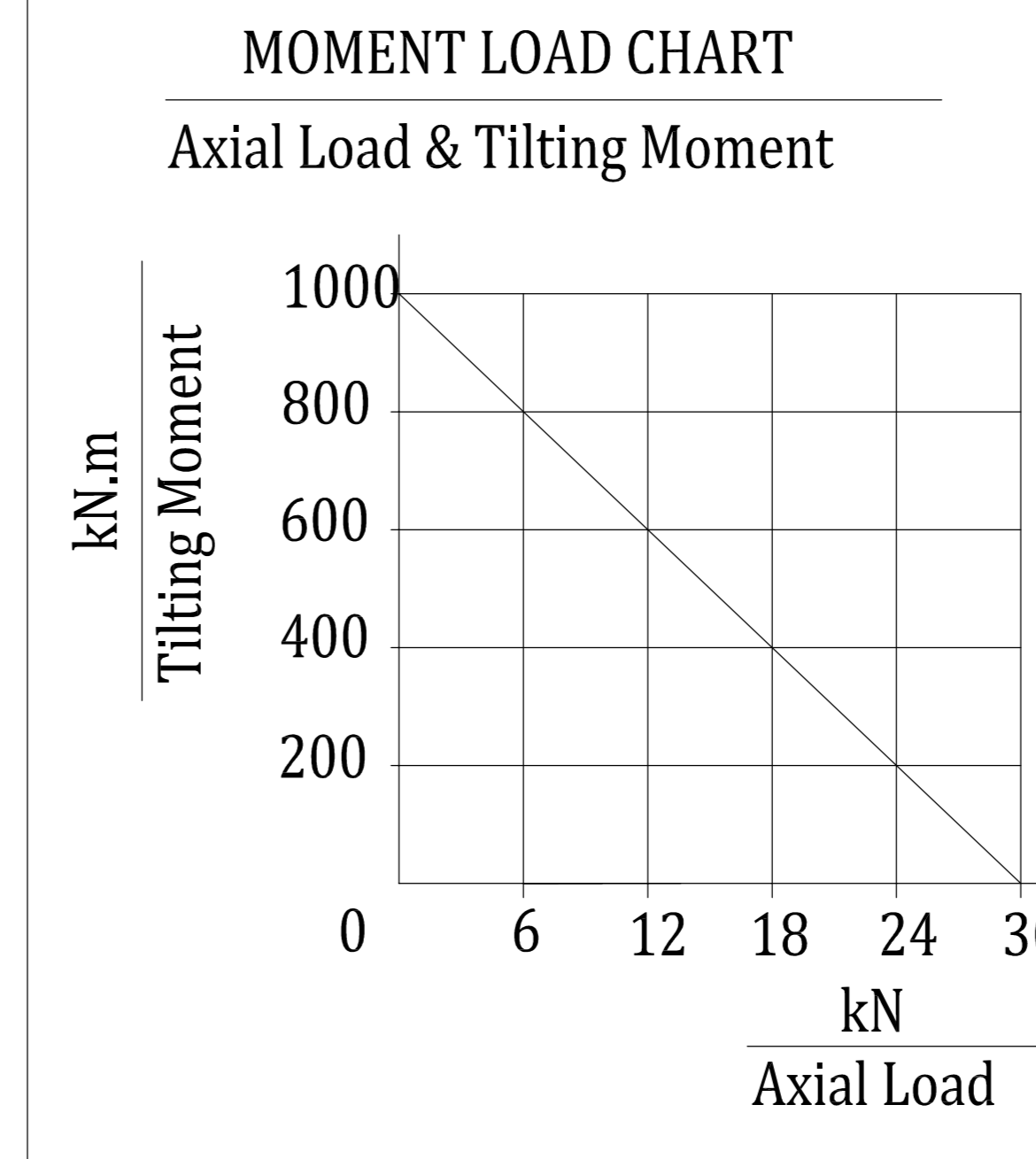
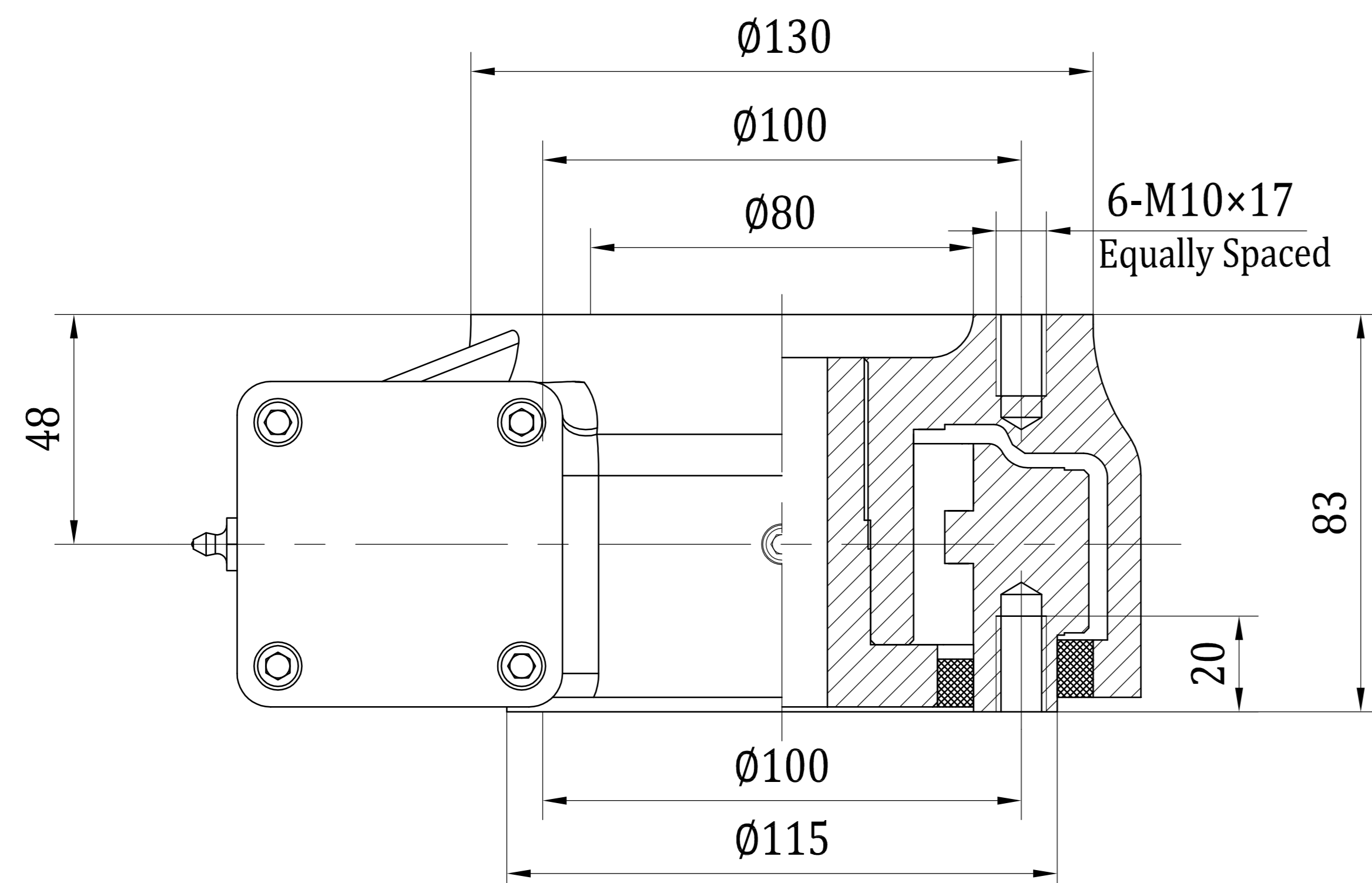


Wire Define:
 Pin 1 (black) motor -
 Pin 2 (red) motor +
 Pin 3 (black thin) hall -
 Pin 4 (red thin) hall +
 Pin 5 (green) hall A
 Pin 6 (yellow) hall B
 Pin E (yellow green) GND

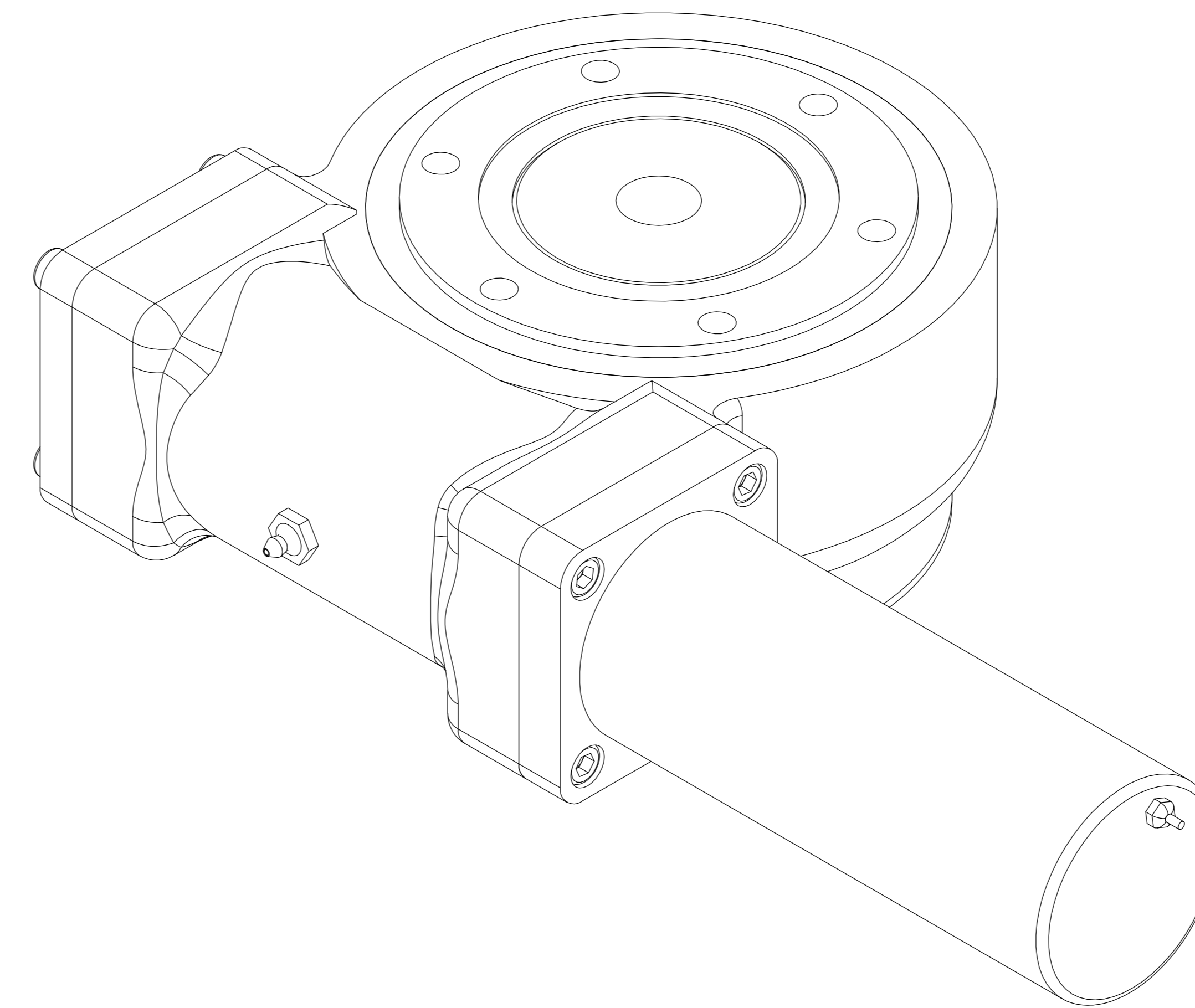
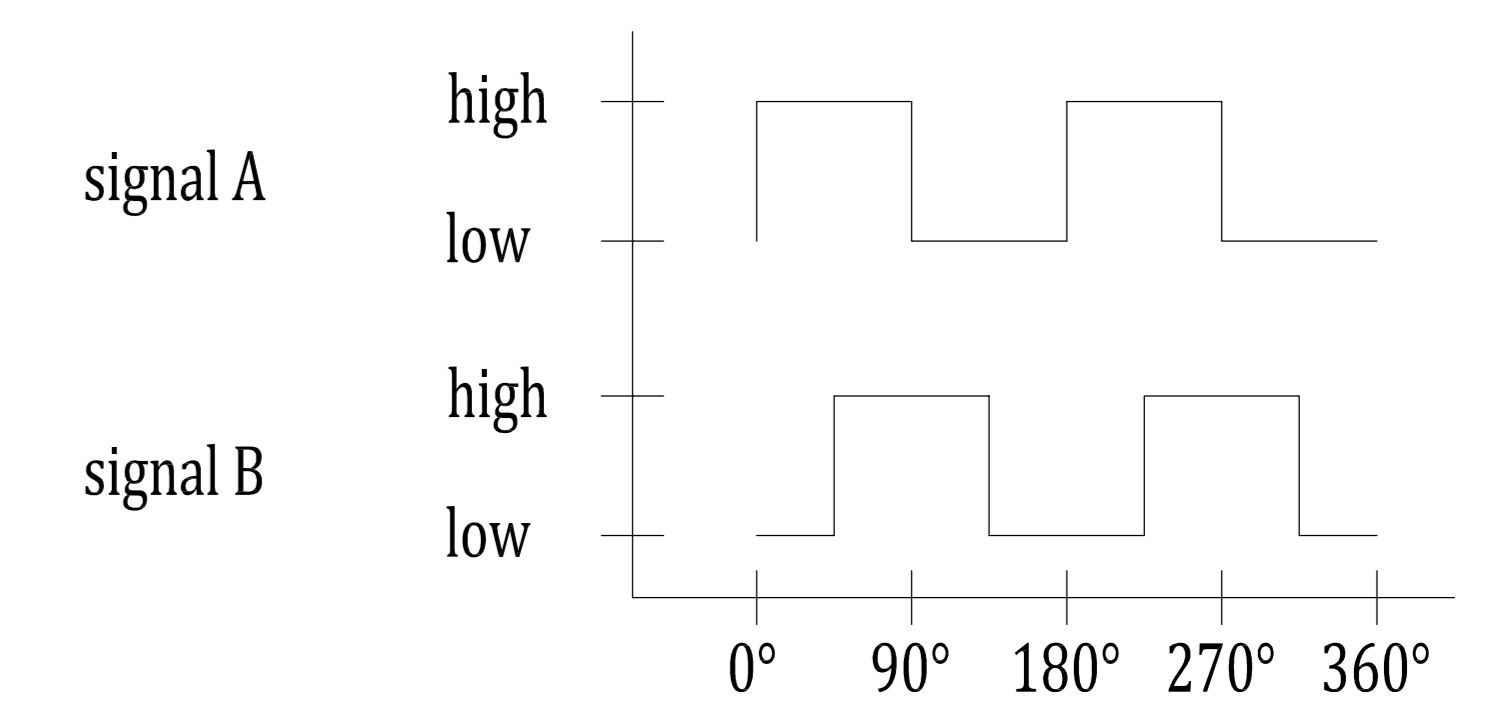
Cable
1m



Slewing Drive Performance Parameters		
Rated Output Speed	0.048rpm	
Output Torque	818N.m	603 lbf.ft
Tilting Moment	1200 N.m	885 lbf.ft
Holding Torque	2200N.m	1623 lbf.ft
Static Axial Rating	30 kN	6750 lbf
Static Radial Rating	15 kN	3375 lbf
Dynamic Axial Rating	9.6 kN	2160 lbf
Dynamic Radial Rating	8.4 kN	1890 lbf
Gear Ratio	62:1	
Precision	≤0.2°	

24VDC Planetary Reducer Motor Performance Data (24H/30/33)	
Rated Output Torque	33 N.m
Rated Output Speed	3 rpm
IP Class	IP 65
Gear Ratio	575:1
Rated Current	<1.9 A

MAGNETIC PULSE GENERATOR DATA		
Output type	-	voltage output
pull-up resistor	-	yes
Output signal	-	2 square wave signals
Phase quadrature	-	90 °
Impulses per revolution	ppr	2,channels A and B
Operating voltage	VDC	DC5-24
Operating current	mA	max. 12
Deviation of pulse width	-	max. 15 °
Deviation of phase shift	-	max. 15 °
Output voltage(low level)	VDC	max. 0.4 (20mA)
SIGNAL RISE TIME	ns	85
SIGNAL DECAY TIME	ns	60
Operation temperature	°C	-40 - +85



REV	DATE	REVISER	REVISER
DESIGNED BY	2019/8/1	Li Ming	
CHECKED BY	2019/8/1	Rui Wang	
APPROVED BY	2019/8/1	Shane Zhang	

ALL PROPRIETARY RIGHTS IN THE SUBJECT MATTER HERE OF ARE RESERVED, AND NO PERMISSION IS GRANTED OR TO DISCLOSE REPRODUCE THIS PRINT IN WHOLE OR IN PART, ANY OF THE INFORMATION TO OTHERS.

www.coresundrive.com
Coresun Drive Equipment Changzhou Co., Ltd.

Slewing Drive

SC3-62B-RC-24H3033

WEIGHT 15 kg

SCALE 1 : 3

SIZE A3

SHEET 1 / 1

REV A